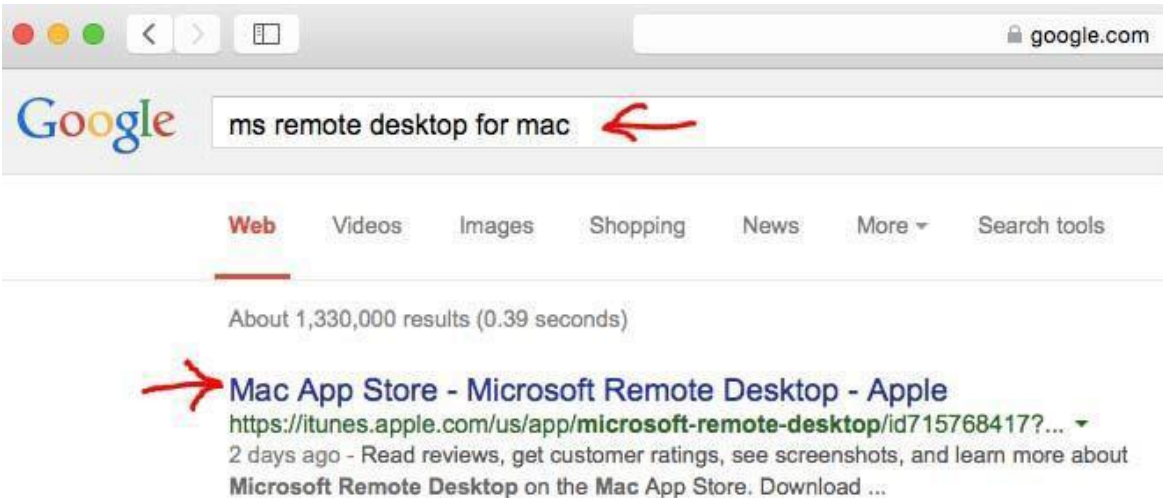


## How do I Install and Configure MS Remote Desktop for the Haas Terminal Server on my Mac?

In order to connect remotely to a PC computer from your Mac, we recommend the MS Remote Desktop for Mac client. The instructions below will show you how to download, install, and configure MS Remote Desktop for Mac on your computer. Please note that you will **need your Apple ID** in order to download the client.

Step	Procedure
1	To download the client, on your browser go to Google and do a search for <b>“MS Remote Desktop for Mac”</b> . The MS Remote Desktop will usually be the first one on the list, and it will point you to the apple store.
 A screenshot of a Google search page. The search bar contains the text "ms remote desktop for mac" with a red arrow pointing to it. Below the search bar, the "Web" tab is selected. The search results show "About 1,330,000 results (0.39 seconds)". The top result is "Mac App Store - Microsoft Remote Desktop - Apple" with a red arrow pointing to it. The URL is "https://itunes.apple.com/us/app/microsoft-remote-desktop/id715768417?...". Below the URL, it says "2 days ago - Read reviews, get customer ratings, see screenshots, and learn more about Microsoft Remote Desktop on the Mac App Store. Download ...".	
2	Once you click on the above link you will be sent to the page below. <b>Click on the blue button “View in Mac App Store”</b> .

 A screenshot of the Mac App Store preview page for the Microsoft Remote Desktop app. The page shows the app icon, a description, and a "View in Mac App Store" button with a red arrow pointing to it. The description says: "With the Microsoft Remote Desktop app, you can coi anywhere. Experience the power of Windows with Re your work done wherever you are." Below the description, there are links for "Microsoft Corporation Web Site" and "Microsoft Rem Agreement". At the bottom, there is a section for "What's New in Version 8.0.16" with two bullet points: "• Issues fixed related to file transfer using folder rec" and "• Issues fixed for connecting through a gateway".	
---	--

Step	Procedure
------	-----------

3	Once at the Apple App Store, <b>click on the blue button “Get”</b> .
---	--



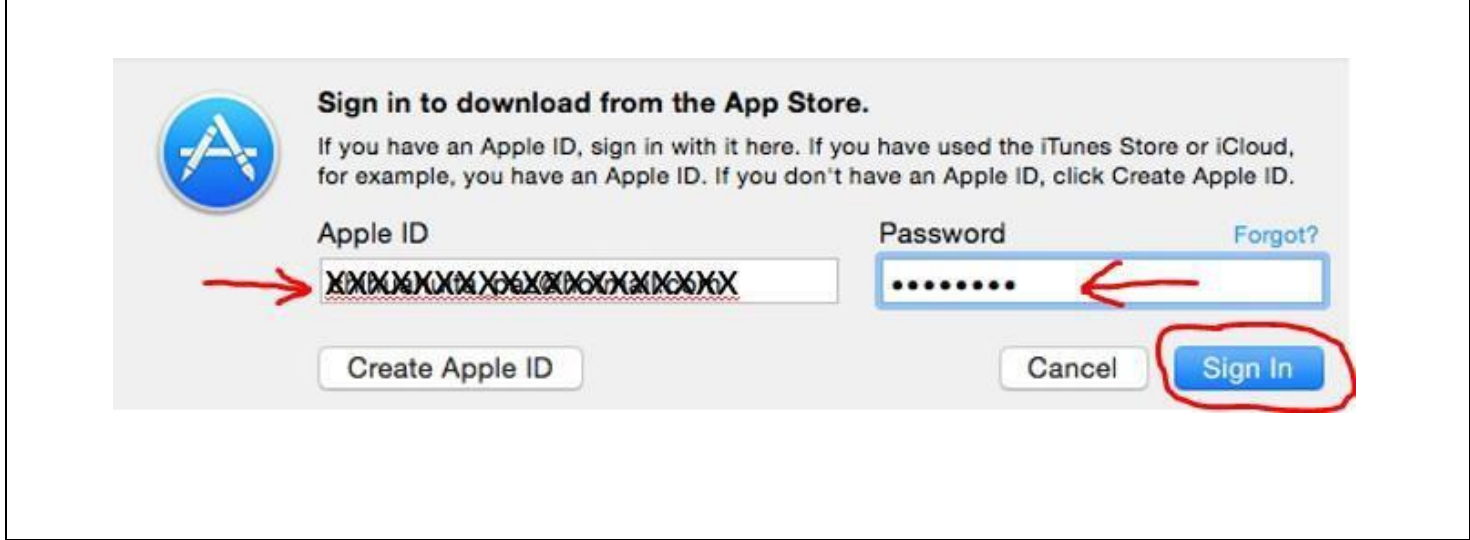
Step	Procedure
------	-----------

4	Next the <b>click the green button “Install App”</b> .
---	--



Step	Procedure
------	-----------

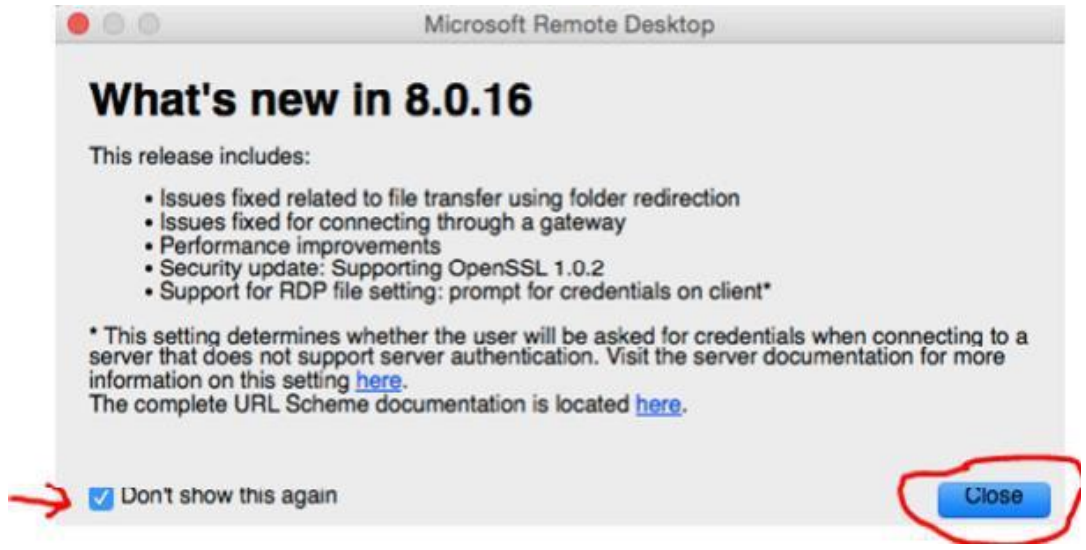
5	<p>At the next window <b>enter your Apple ID and Password</b>, and then <b>click the “Sign In” blue button</b>.</p> <p><b>Note:</b> <i>If you don't have an Apple ID, click the “Create Apple ID” button if you don't have one yet, and go through the process of creating one, then come back to this step.</i></p>
---	--



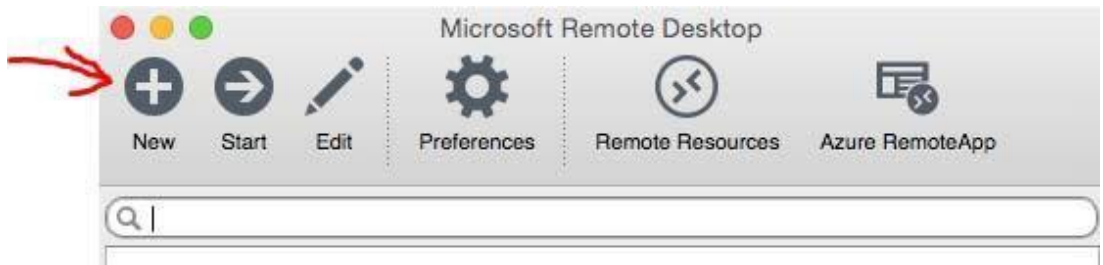
Step	Procedure
6	Once you sign in with your Apple ID you will be taken back to the Apple Store. <b>Click the blue button “Open”</b> to set up the MS Remote Desktop client on your Mac.



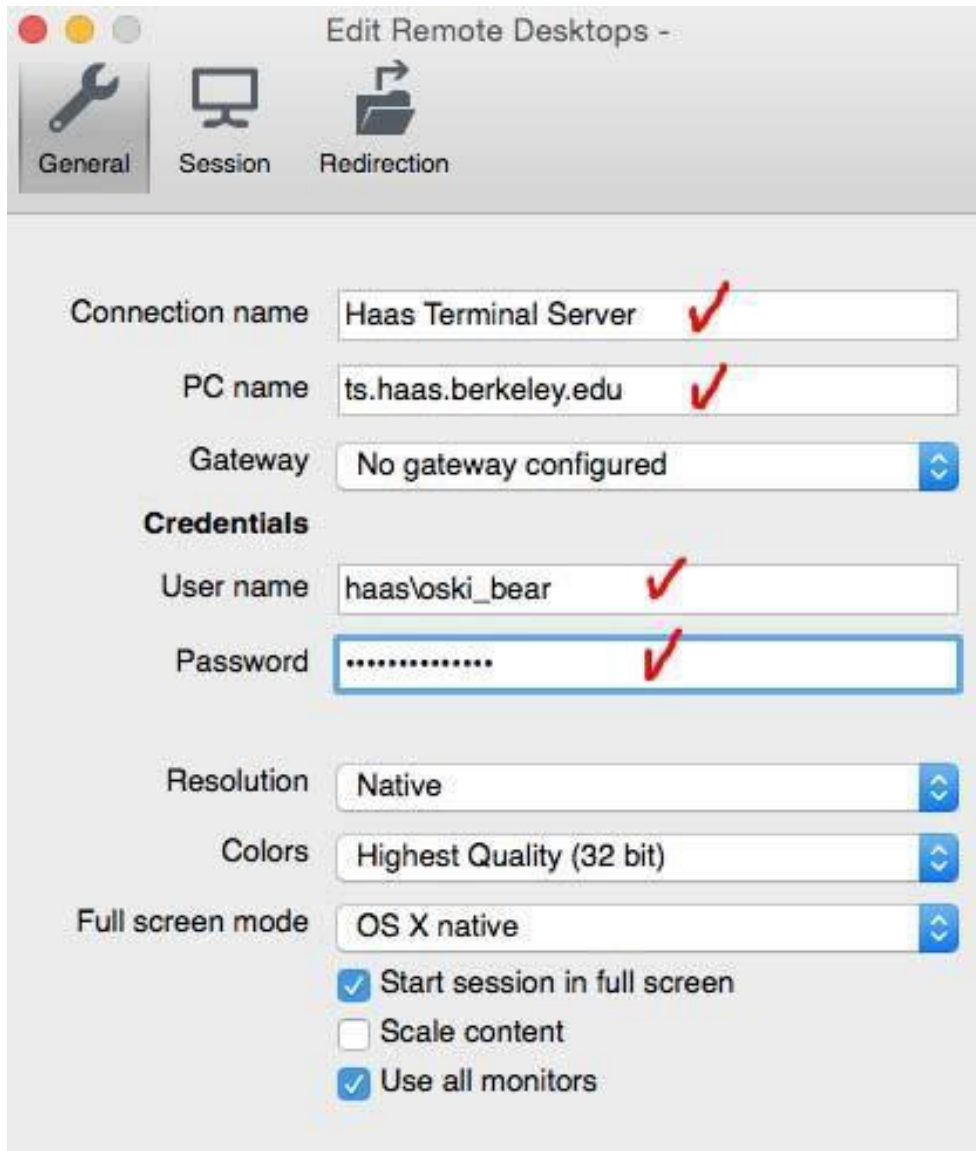
Step	Procedure
7	If you get the “What’s New...” screen, <b>check the box “Don’t show this again”</b> at the lower left hand corner, then click the blue button “Close”.



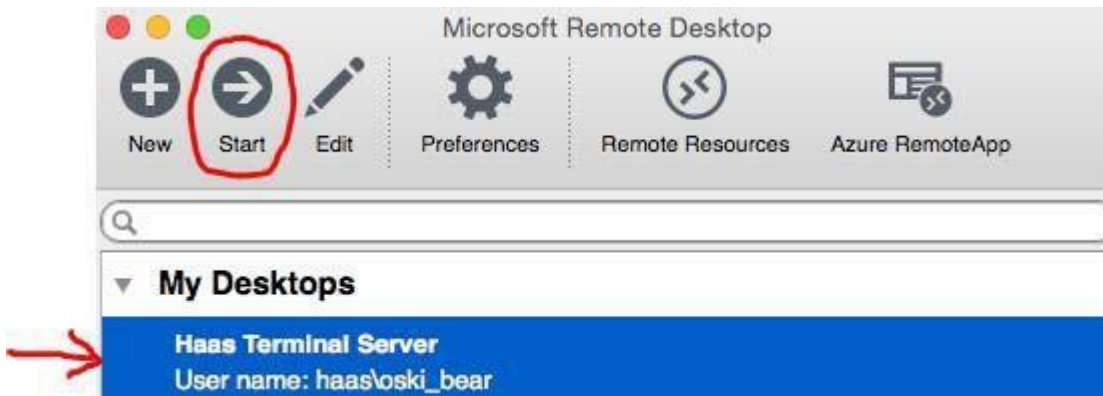
Step	Procedure
8	Once the MS Remote Desktop client opens, <b>click the “ + “ sign on the upper left hand corner</b> to set up a new connection.



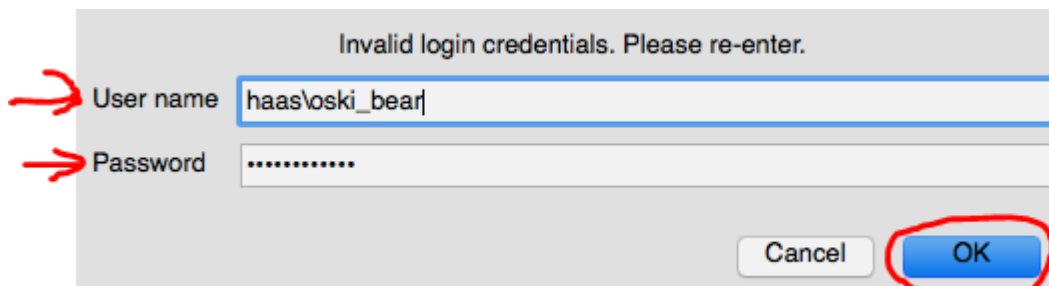
Step	Procedure
9	<p>At the Remote Desktop connection settings, enter the following settings.</p> <p>Connection name: <b>Haas Terminal Server</b> (or a friendly name of your choice to identify this remote connection)                      PC name: <b>ts.haas.berkeley.edu</b></p> <p>Under “Credentials” enter your <b>Haas credentials</b> in the following format:</p> <p>User name: <b>haas\Haas username</b> (usually first_last name)                      Password: <b>Your Haas password</b></p> <p>You can leave everything else as the default.</p>



Step	Procedure
10	<p>Select the <b>connection</b> that you just set up, in the sample below “<b>Haas Terminal Server</b>” and then click “<b>Start</b>” to connect to a Haas terminal server.</p> <p><b>NOTE:</b> If you are <i>not at Haas</i> or on campus, you must log in to the Cisco VPN first in order to connect remotely to our terminal servers or to a computer at Haas. If you have not installed and set up the Cisco VPN on your Mac, please see the document “<a href="#">How do I Install and Setup the Cisco VPN on my Mac?</a>”</p>



Step	Procedure
11	<p>If you are prompted to enter your Haas credentials again, enter them in the following format:</p> <p>User name: <b>haas\Haas username</b> (<i>Usually first_last name</i>)                  Password: <b>Haas password</b></p>



Step	Procedure
12	<p>After entering your Haas credentials you will be logged in to the Haas Terminal Server. You can see the friendly name you gave this connection in step 9 at the top of the window. <b>That's it</b>, you are connected to the Haas TS.</p>

