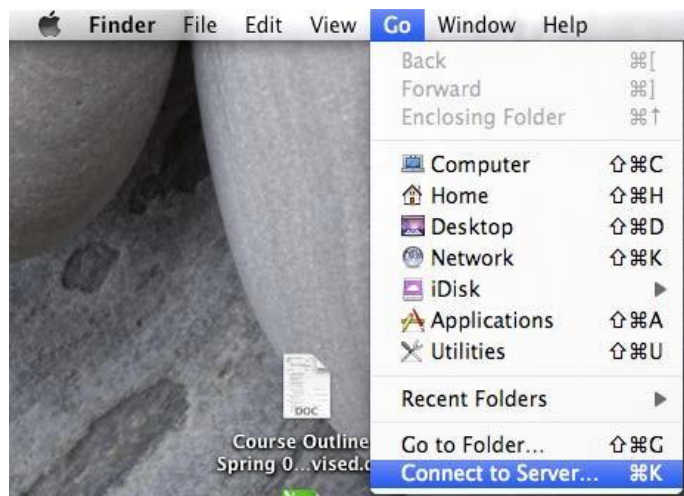




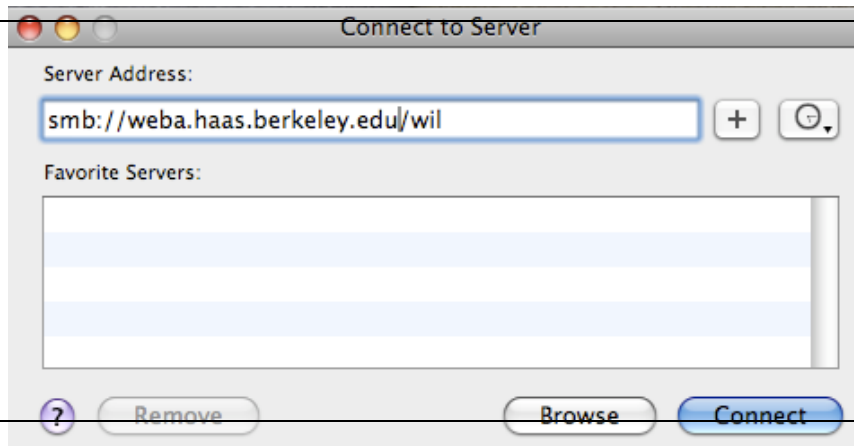
How do I Map a Network Share/Drive on a Mac?

Before you start you will need to have the name of the server and the name of the share to which you would like to connect. For a list of common Haas shares that you can map, see the end of this document.

Step	Procedure
1	<p>In this example I will be using the server name “weba” and the share name will be “wil”. In windows the map is the following: <code>\\weba\wil</code> or the fully authenticated path is <code>\\weba.haas.berkeley.edu\wil</code></p> <p>On your mac computer open finder. If you double click on your harddrive finder will open. Click on the Go menu and select “Connect to Server”.</p>



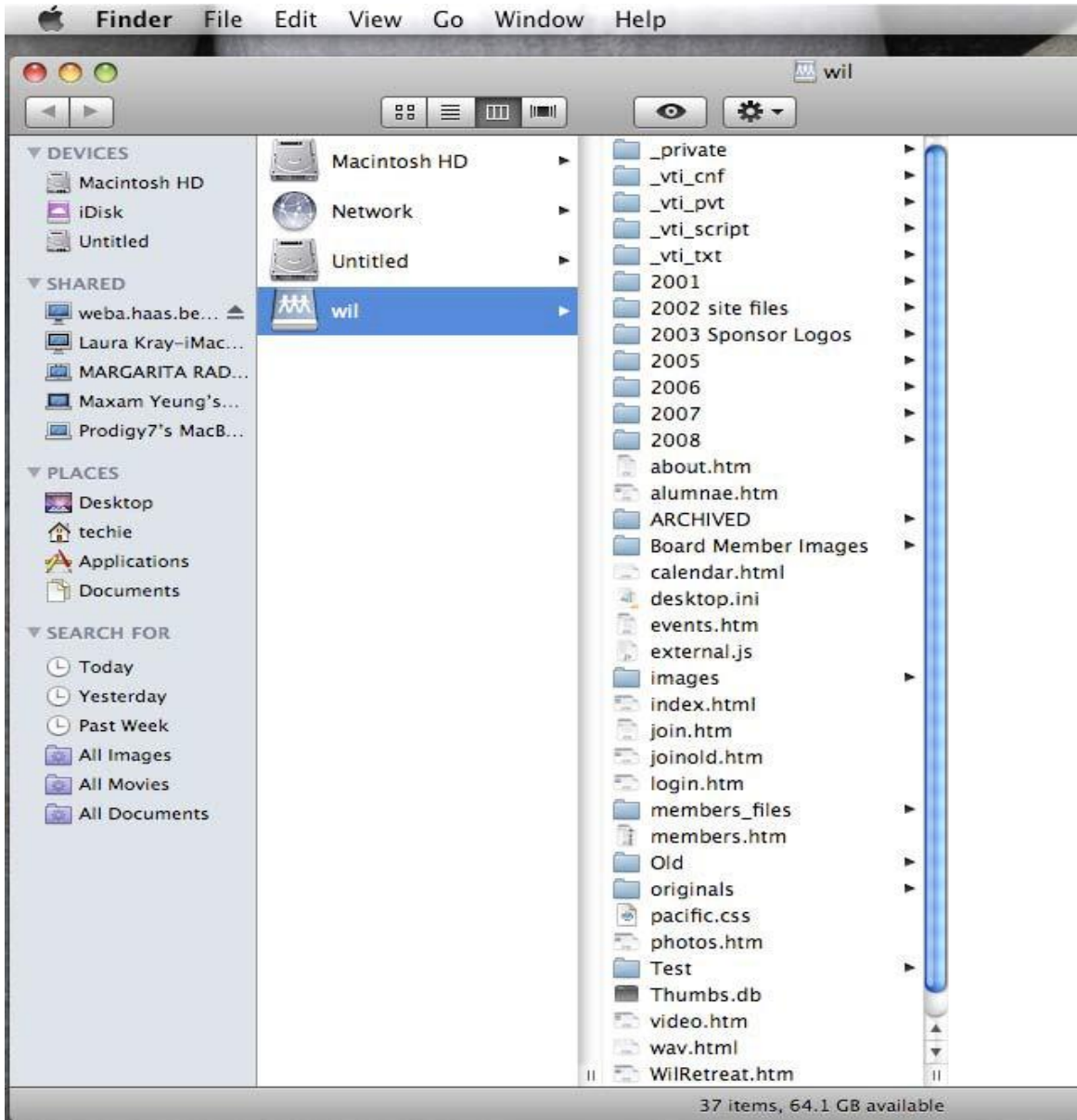
Step	Procedure
2	<p>Under Server Address: enter the path for the server in a URL format. For example if the windows path is <code>\\weba.haas.berkeley.edu\wil</code>, enter <code>smb://weba.haas.berkeley.edu/wil</code> This is the fully authenticated name for the share. Click Connect when done.</p> <p>Note: <i>If you are at Haas you can enter <code>smb://weba/wil</code>, however if you then go home and try to reconnect to the share from there you will need to remap it again-- with the fully authenticated name. Also, to map a share from home you will need to be connected to the Cisco VPN before you try to map or open the share.</i></p>



Step	Procedure
3	<p>You will need to authenticate with your Haas credentials at the next screen. Enter your username and password in the following format:</p> <p>Name: haas\username Password: Your Haas password</p> <p>Also check the box “Remember this password in my keychain” so that you don’t have to keep entering it when you need to access the share.</p> <p>Click Connect</p>



Step	Procedure
4	The share will open in Finder and you should be able to use it as you normally would.



To map your

H drive enter: **smb://hcs-data2.haas.berkeley.edu/username\$**

P drive: **smb://hcs-data.haas.berkeley.edu/public**

I drive: **smb://faculty.haas.berkeley.edu/username\$**