

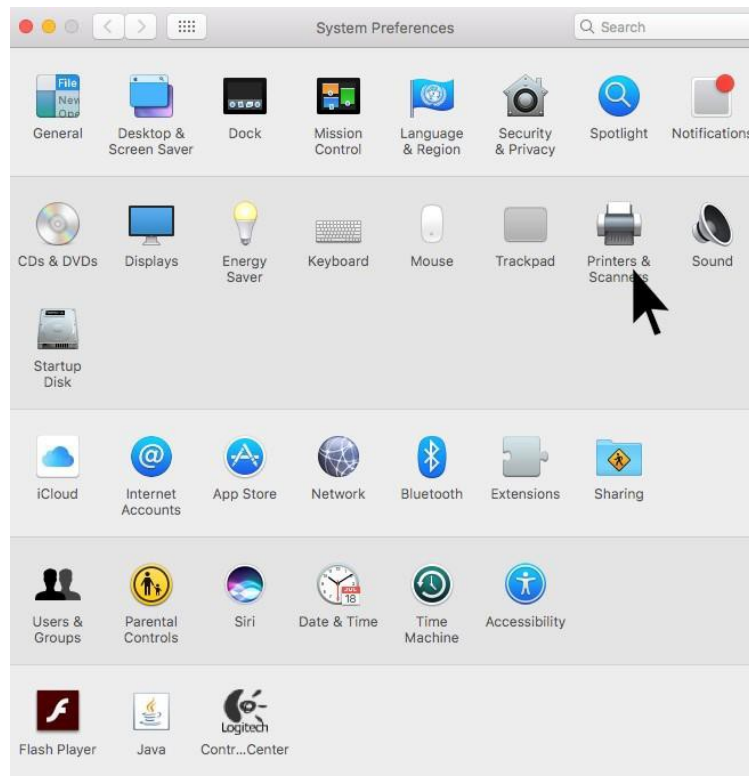
## Mac: How do I Add the Chou Hall Color Printers?

NOTE: You have to be on AirBears2 to be able to add the printers.

**Must install HP Drivers and select specific driver for the printer model:**

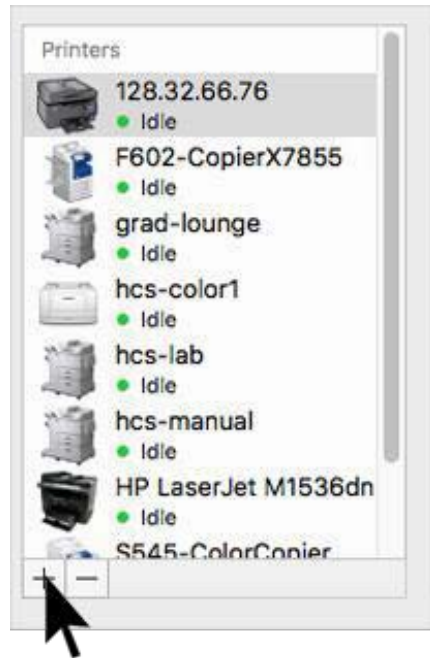
[https://support.apple.com/kb/dl1888?locale=en\\_US](https://support.apple.com/kb/dl1888?locale=en_US)

| Step | Procedure  |
|------|--|
| 1    | To begin, go to your <b>System Preferences</b> and click on <b>Printers &amp; Scanners</b> . |



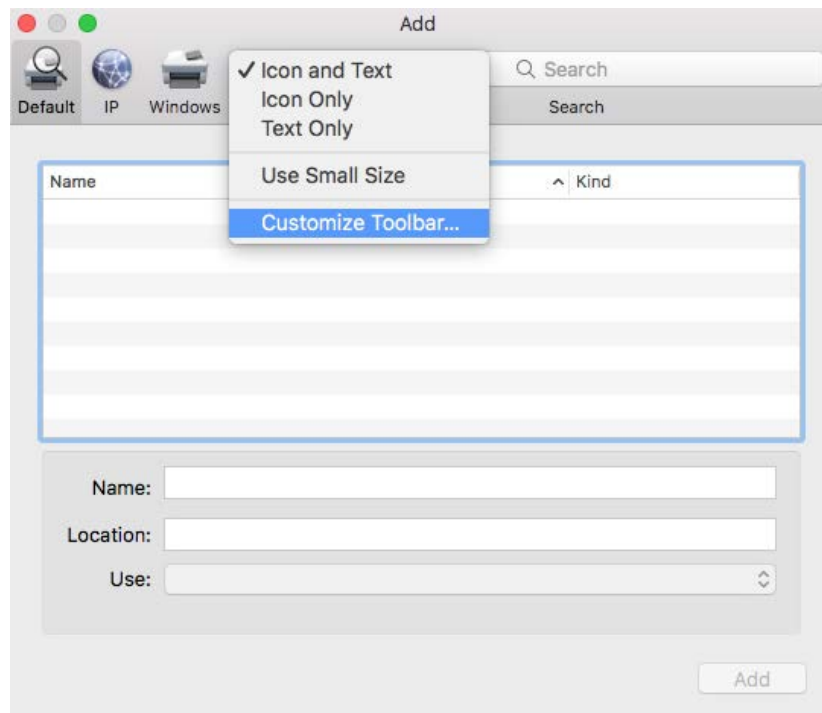
| Step | Procedure |
|------|-----------|
|------|-----------|

|          |  |
|----------|--|
| <b>2</b> | Click on the <b>Add ( + ) button</b> to begin adding the new copiers/printers. |
|----------|--|

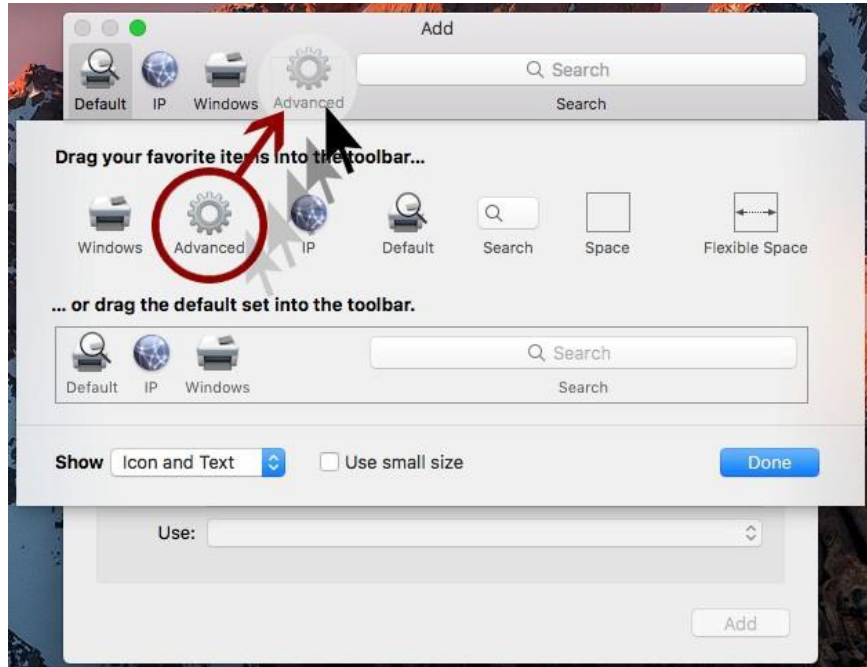


| Step | Procedure |
|------|-----------|
|------|-----------|

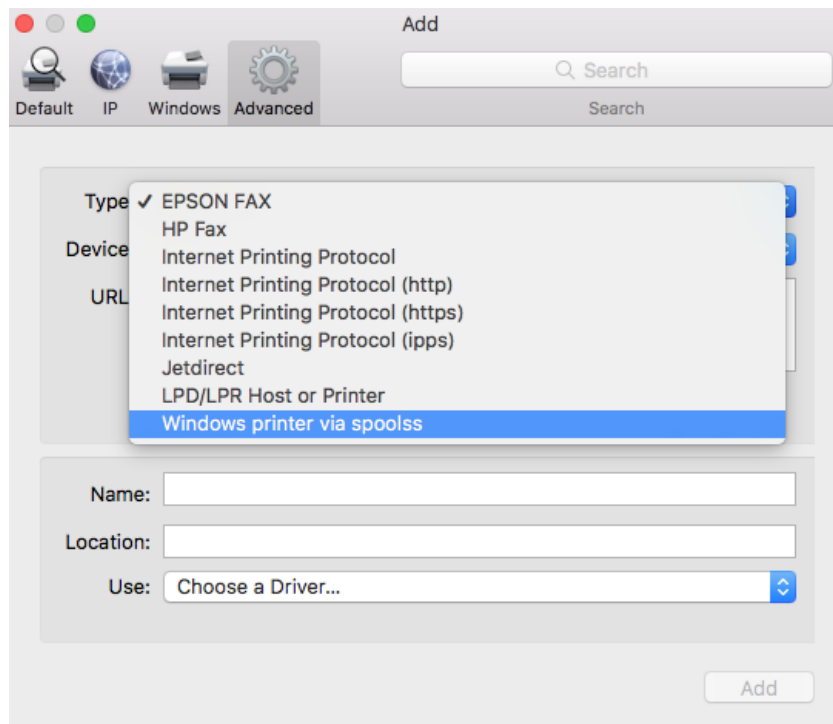
|          |  |
|----------|--|
| <b>3</b> | In the ensuing dialog box, see if you have the <b>Advanced options icon</b> available. If you do not see it, right click along the menu ribbon (but not on any of the icons) and choose <b>Customize Toolbar</b> . |
|----------|--|



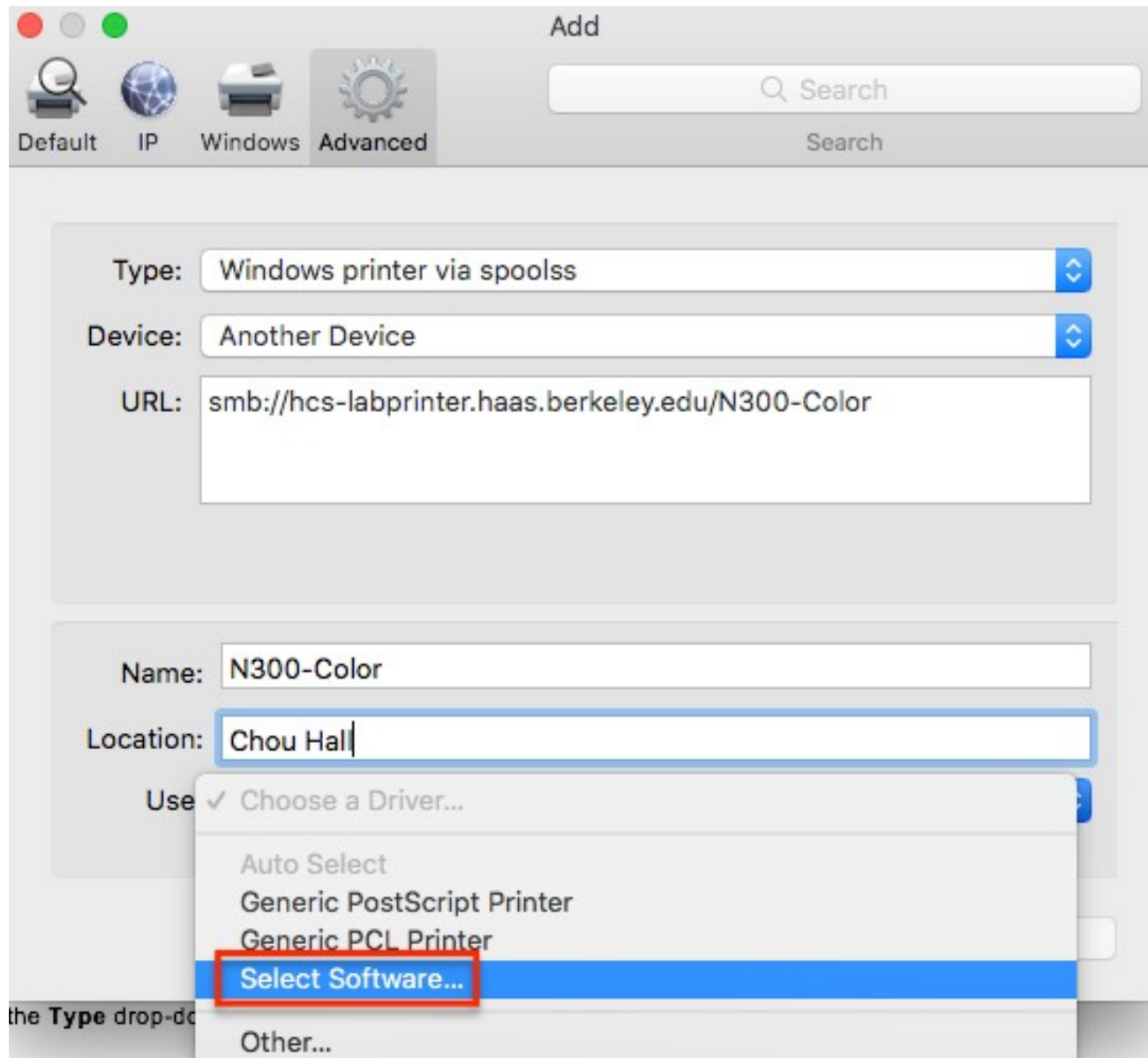
| Step | Procedure   |
|------|---|
| 4    | In the ensuing options, click, hold and drag the <b>Advanced (gear) icon</b> to the open space in the <b>Add</b> menu ribbon. In the example below, this is the space to the right of the Windows icon. |



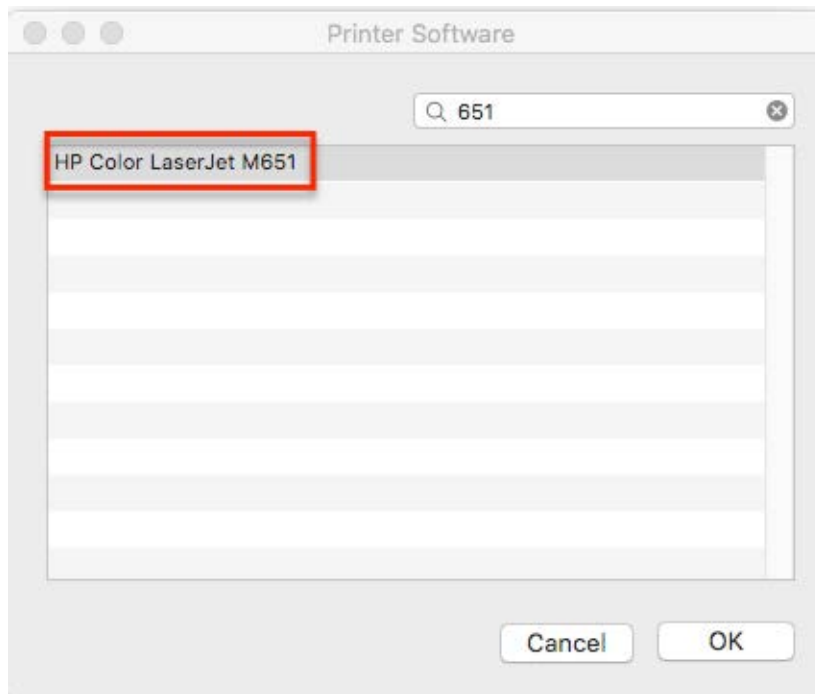
| Step | Procedure   |
|------|---|
| 5    | After adding the <b>Advanced</b> options gear, click on it, and in the <b>Type</b> drop-down menu choose <b>Windows printer via spoolss</b> . |



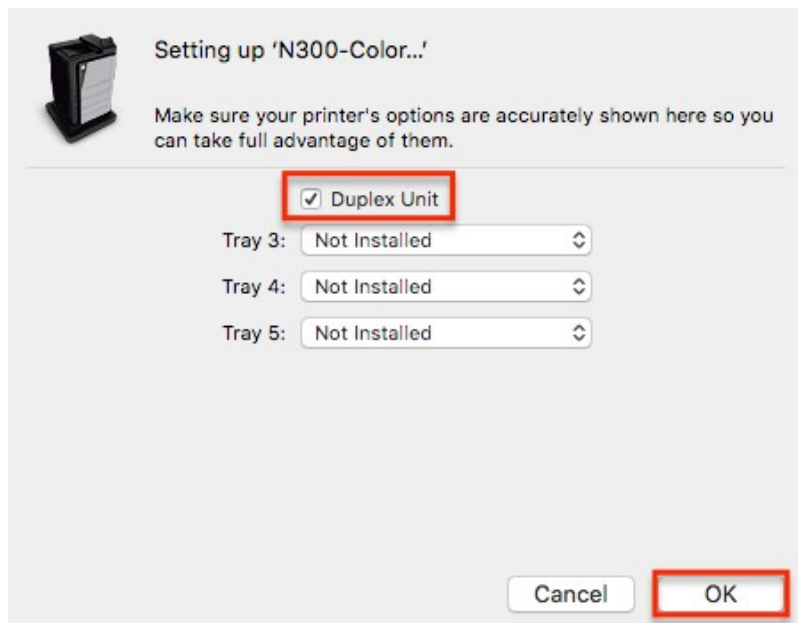
| Step | Procedure   |
|------|---|
| 6    | <p>In the <b>URL: box</b>, type the printer address. This begins with the prefix <b>smb://hcs-labprinter.haas.berkeley.edu/</b> followed by the printer name. You can copy-and-paste the address from the list below.</p> <p>Your options include:</p> <p><b>3<sup>rd</sup> Floor</b><br/>smb://hcs-labprinter.haas.berkeley.edu/N300-Color</p> <p><b>5<sup>th</sup> Floor</b><br/>smb://hcs-labprinter.haas.berkeley.edu/N500 Color</p> <p>In <b>Name:</b> and <b>Location:</b> you can choose to name the printer.</p> <p>In the <b>Use: Choose a Driver</b> drop-down menu, choose <b>“Select Software...”</b></p> |



| Step | Procedure  |
|------|--|
| 7    | Enter "651" into the search box, select "HP Color LaserJet M651" and Click OK<br><b>NOTE:</b> the HP Mac Drivers must be installed beforehand. |



| Step | Procedure   |
|------|---|
| 8    | Click Add and the driver will take a few minutes to set up and install. Check on the <b>Duplex Printing Unit</b> option and click <b>OK</b> , and your chosen printer should be added to your Printers list.<br><br>Repeat these steps to add other printers if needed. |



| Step | Procedure   |
|------|---|
| 9    | <p>When you run a print job on the new printer for the first time, you may be prompted to authenticate. Please log in with your <b>Haas credentials*</b> and use the format: <b>haas\your login name</b> as seen below.</p> <p>Check the <b>Remember this password in my keychain</b>, and then click <b>OK</b> when you're done.</p> <p><b>*NOTE:</b> If you are using a <b>Berkeley Image</b> machine, you will need to log in using your <b>CalNet</b> credentials. If you have questions about this, contact <a href="#">Help Desk</a>.</p> |

