




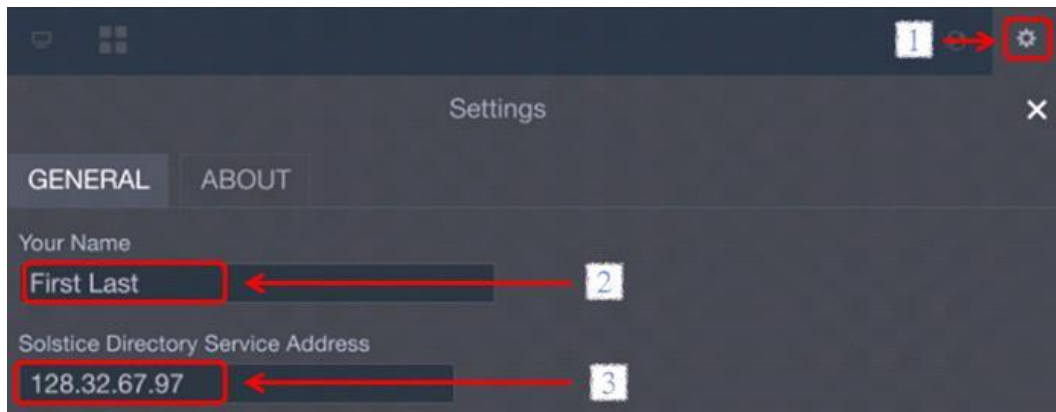
How do I setup the Solstice App for Wireless Display on My Android Device?

NOTE: Make sure you are connected to AirBears2  and have downloaded the Solstice Client  from the Google Play Store 

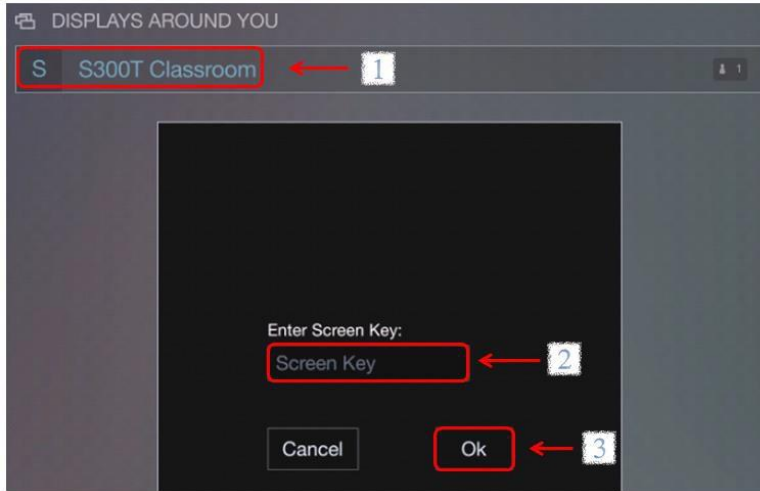
A	If you are installing Solstice while in a Classroom, then enter the Solstice IP Address displayed on the screen into your Phone's Browser. This will redirect you to download the Solstice App with the Classroom Directory Service embedded for auto-discovery (Skip to Step 3 after launching Solstice).
B	If you are installing the Solstice App directly from the Google Play Store, you will need to setup the Directory Service in order to enable classroom auto-discovery (Step 2).
Step	Procedure
1	Launch the " Solstice Client " by tapping on the Solstice Icon



Step	Procedure
2	<p> : Select the gear icon on the upper right</p> <p> : Enter your Name</p> <p> : Enter 128.32.67.97 (Solstice Directory Service- this will enable Haas Classroom Discovery)</p> <p>Click "Done" and go back to "Discovered Displays"</p>



Step	Procedure
3	<p>1 : Select the Classroom you would to connect to (wait for the displays to appear)</p> <p>2 : Enter the “Screen Key” provided on the Classroom Display</p> <p>3 Click “Ok”</p>



Step	Procedure
4	You are now connected and ready to share 😊

