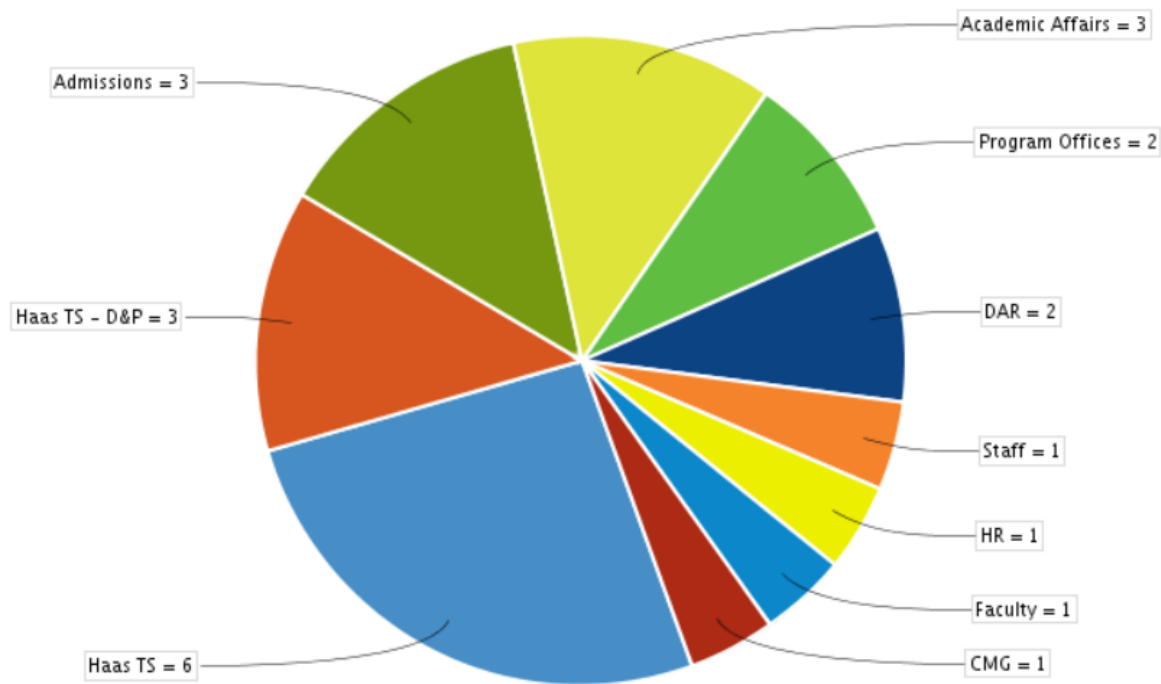


TS Metrics: July 2018

# Project Backlog



## Data Table

	Issues	%
Haas TS	6	26%
Haas TS - D&P	3	13%
Admissions	3	13%
Academic Affairs	3	13%
Program Offices	2	8%
DAR	2	8%
Staff	1	4%
HR	1	4%
Faculty	1	4%
CMG	1	4%