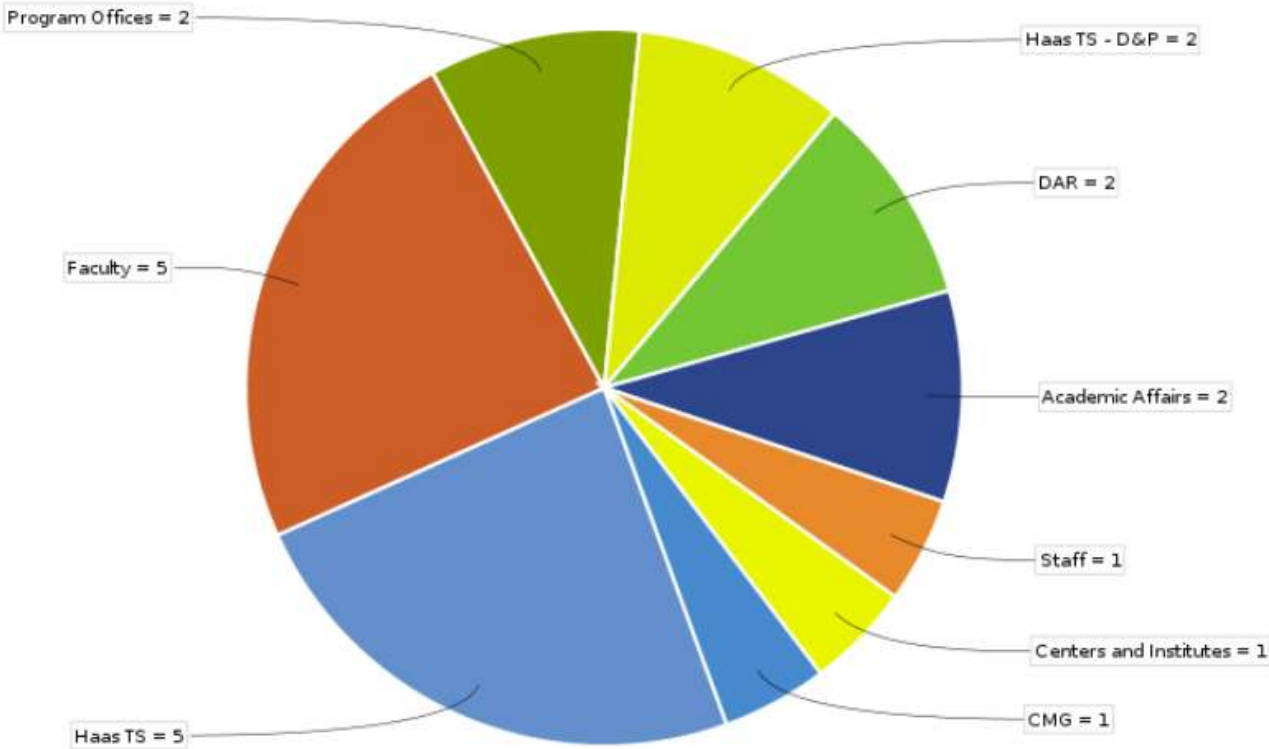


TS Metrics: October 2018

Project Backlog



Data Table

| | Issues | % |
|------------------------|--------|-----|
| Haas TS | 5 | 23% |
| Faculty | 5 | 23% |
| Program Offices | 2 | 9% |
| Haas TS - D&P | 2 | 9% |
| DAR | 2 | 9% |
| Academic Affairs | 2 | 9% |
| Staff | 1 | 4% |
| Centers and Institutes | 1 | 4% |
| CMG | 1 | 4% |