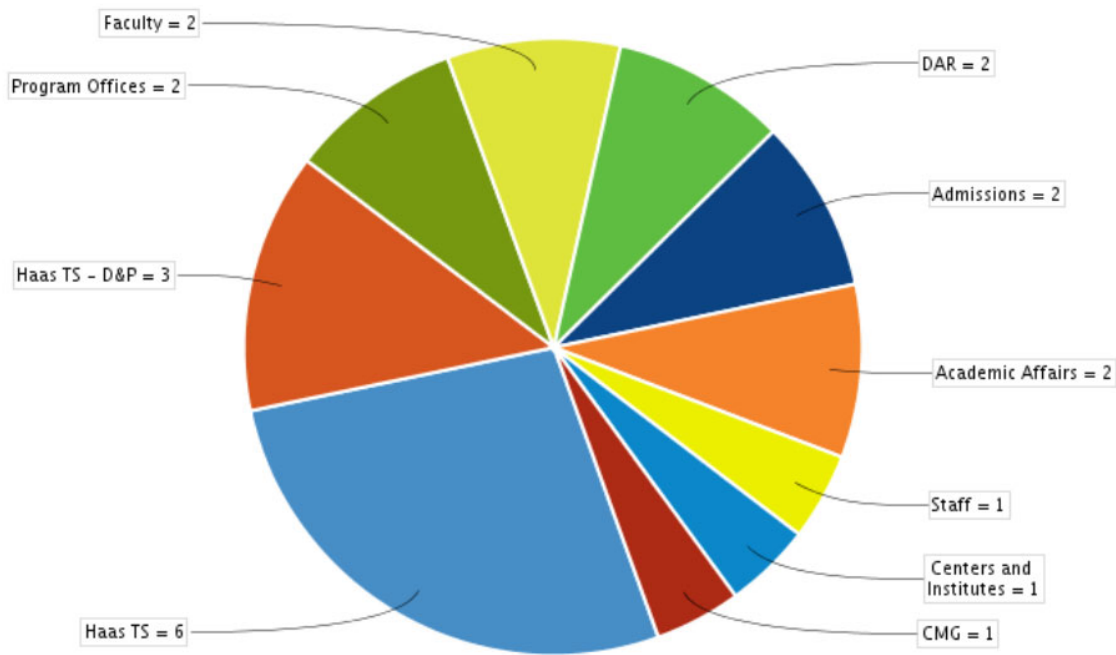


TS Metrics: September 2018

Project Backlog



Data Table

	Issues	%
Haas TS	6	27%
Haas TS - D&P	3	13%
Program Offices	2	9%
Faculty	2	9%
DAR	2	9%
Admissions	2	9%
Academic Affairs	2	9%
Staff	1	4%
Centers and Institutes	1	4%
CMG	1	4%